

Decommissioning of Tank 4 at Galeota Tank Farm, Guayaguayare (CEC 6125/2020)



Heritage
PETROLEUM
COMPANY LIMITED

Heritage Petroleum Company Limited (“Heritage”) wishes to inform its stakeholders of its **intention to decommission and demolish crude oil storage tank #4 at the Galeota Tank Farm, Guayaguayare.**

Tank #4 is an out-of-service tank, with a capacity of 60,000 barrels. The Environmental Management Authority (“EMA”) has issued (CEC 6125/2020) which governs and manages the environmental impact of this project. Impact to public health and safety is expected to be minimal.

The decommissioning is expected to commence on 16th August 2021.

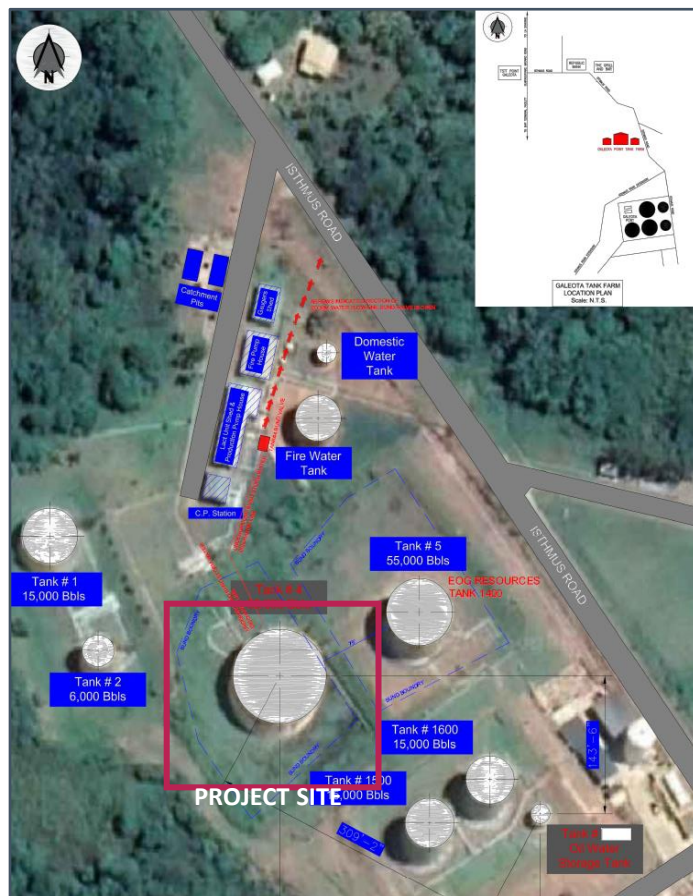
PROJECT ACTIVITIES

Activities to be undertaken at the Project Site:

- Site preparation – isolation and removal of all associated pipelines, creation of access way to Tank and construction of temporary wash bay for cleaning tank sheets;
- Demolition of tank roof and upper shells of tank.
- Cut, decontaminate tank shell sheets and transport to laydown yard for storage;
- Removal of free water and basal sediments contained with lower shell of tank and transport to waste treatment facility.
- Cut, decontaminate lower tank shell sheets and transport to laydown yard for storage.
- Transportation of waste will be conducted along Isthmus Road, Guayaguayare Road, Naparima Mayaro Road through San Fernando to a Waste Treatment facility in La Brea.
- Site restoration.

No traffic disruptions are expected to occur as a result of this project.

FIGURE 1: PROJECT LOCATION



This project is expected to last sixty-six (66) continuous working days from date of commencement. Work will be executed Monday to Friday from 7:00 a.m. to 5:00 p.m.

Potential Significant Impacts to Public & Mitigation Measures

Potential Significant Impacts	Mitigation Measures
Exhaust from vehicles and equipment	All equipment and vehicles will be inspected before use. Heritage will ensure vehicles are maintained in accordance with manufacturer specifications,.
Transportation of basal sediments, water and tank metal sheets and piping	Transportation of all waste from the site inclusive of basal sediments and metal sheets will be managed by a Journey Management Plan. The Journey Management Plan will ensure that no basal sediments or water leaks or spills onto the roadway and surrounding environment or the load becomes unsecured from the vehicle during transportation. Emergency response procedures for response and clean-up shall be immediately initiated in the event that any spills occur.

If you have any questions or concerns surrounding this project and its related activities; please submit your questions and comments to Heritage’s Community Relations Officer – **Mr. Kahlil Comissiong** at Kahlil.Comissiong@heritage-tt.com.

Thank you.